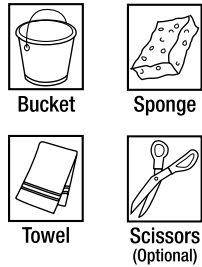


# GETTING STARTED

## PARTS OVERVIEW



## TOOLS NEEDED



## TOP DOWN VIEW



# STEP 1: PREPARE TANK

## A: TURN OFF WATER



## B: DRAIN WATER

Flush toilet to drain most of the water from the tank.

FLUSH



## C: USE SPONGE OR TOWEL TO SOAK UP EXCESS WATER IN TANK



## STEP 2: REMOVE OLD FILL VALVE

### A: REMOVE CONNECTOR

Remove water supply connector from bottom of fill valve by twisting connector nut to the **left (clockwise)**.



Towel  
(Optional)

**NOTE:** Inspect water supply connector. Replace it if it is worn, or you don't know how old it is, to prevent flooding and property damage.



### B: REMOVE OLD LOCKNUT

Below tank, twist locknut to the **left (clockwise)** to remove from fill valve.



### C: REMOVE OLD FILL VALVE

Including refill tube, refill clip and shank washer. **Drain any excess water into bucket** by removing fill valve from tank. (Pull fill valve up)



Bucket  
(Optional)



## STEP 3: ADJUST HEIGHT OF NEW FILL VALVE

### A: TWIST FILL VALVE TO ADJUST HEIGHT

Top of fill valve cap should measure *roughly 3"* above top of overflow pipe when installed.

#### NOTE:

Increasing height allows more water to fill in the tank.



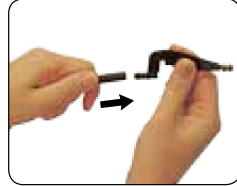
\* The top of the overflow pipe **must be** a minimum of 1" **below** tank lever hole.

## STEP 4: INSTALL NEW FILL VALVE

- A: PUSH REFILL TUBE ONTO FILL VALVE REFILL PORT**

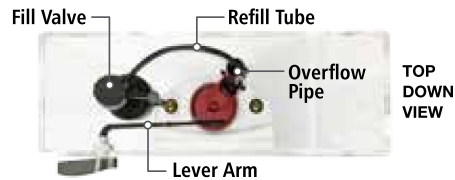


- B: ATTACH REFILL CLIP TO OTHER END OF REFILL TUBE**



- C: INSERT FILL VALVE**

Position refill tube to face flush valve making sure fill valve parts **do not interfere with lever arm**.



- D: ATTACH REFILL CLIP TO OVERFLOW PIPE**

**Note:** If refill tube is too long to fit inside tank with lid closed, remove refill tube from fill valve refill port, cut tube, and reattach to port.



Scissors  
(Optional)



- E: INSTALL LOCKNUT**

Screw locknut to the **right (counterclockwise)** onto fill valve shank (below tank).

**\*Hand-tighten only. DO NOT OVER TIGHTEN.**



\* Over tightening may crack the fill valve or tank causing flooding. Make sure the float cup does not touch the tank walls or tank lever and flush valve.

## STEP 5: FINISHING STEPS

- A: ATTACH WATER SUPPLY CONNECTOR TO FILL VALVE**

Twist to the **right (counterclockwise)**

**\*Hand-tighten only.**

**DO NOT OVER TIGHTEN.**



- B: TURN ON WATER**

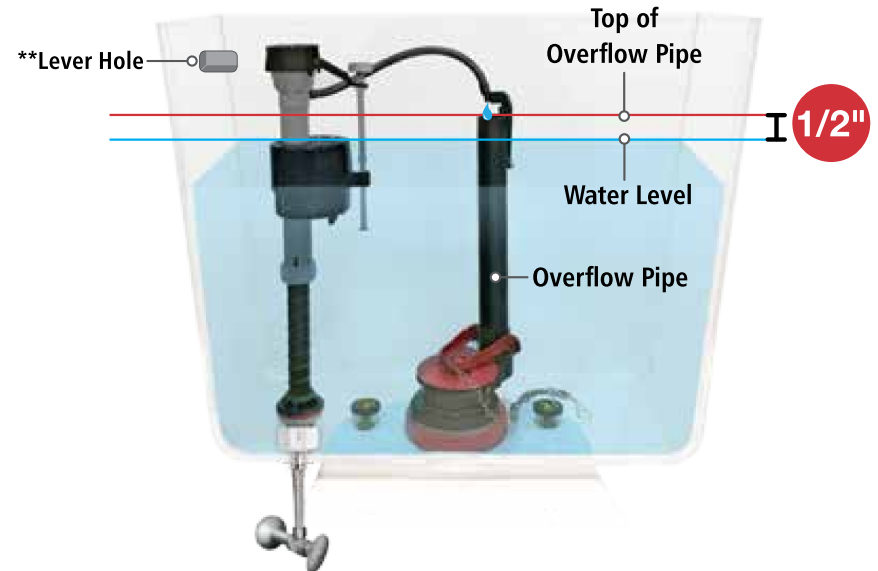
Check for leaks.

(Go to [www.Fluidmaster.com/support](http://www.Fluidmaster.com/support) for leak solutions.)



- C: WATER LEVEL**

After the tank stops filling, water level should fill the tank to **roughly 1/2 inch below top of overflow pipe** to ensure a proper flush. (Does not need to be exact.)



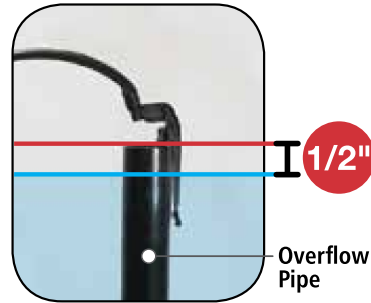
\* Over tightening may crack the fill valve or tank causing flooding. Make sure the float cup does not touch the tank walls or tank lever and flush valve.

\*\* The top of the overflow pipe **must be** a minimum of 1" **below** tank lever hole.

## STEP 6: FINE-TUNE TANK WATER LEVEL

### A: FLUSH THE TOILET TO CHECK THE TANK WATER LEVEL

After the water stops filling the tank, the water level should be **roughly 1/2 inch** below the top of overflow pipe to ensure a proper flush.



See Step 5C for Full Tank view

### B: WATER LEVEL IS TOO LOW

Turn the tank water level adjustment screw clockwise to raise the float. Flush to reset water level.

### WATER LEVEL IS TOO HIGH

Turn the water level adjustment screw counterclockwise to lower the float. Flush to reset water level.



## STEP 7: FLUSH THE TOILET

### A: FLUSH THE TOILET

If you're satisfied with the flush, **YOU'RE DONE!**



## YOU DID IT!

We knew you could!

Share your success story  
with friends and family!



#FixedMyToilet  
#Fluidmaster

**Still not working exactly right?  
See the next page for Troubleshooting.**