

CIVIC Waterline Guide Collection



- Precision-engineered line of pipe supports to streamline rough-ins and finishing work of ABS and PEX
- Easily set the slope of ABS without tools
- Each component enables fast installation, secure support, and lasting durability



WG143 for 3" ABS
WG140 for 1½" ABS

Waterline Guides that snap on to 1½" or 3" ABS and can hold ½", ¾", or 1" PEX. Use with GH100 anchor for mounting ABS with easy slope-setting



SR150 for ½" PEX
SR175 for ¾" PEX

Snap rings to enable Waterline Guides to hold ½" or ¾" PEX. (No snap ring required for 1" PEX)



P101

Ped Lav Guide supports two ½" PEX water lines on 1½" ABS



GH100

Use with Waterline Guides for a quick screw-down anchoring of 1½" or 3" ABS



WG100

Use to anchor ½", ¾", or 1" PEX to any surface

Proudly Distributed by:

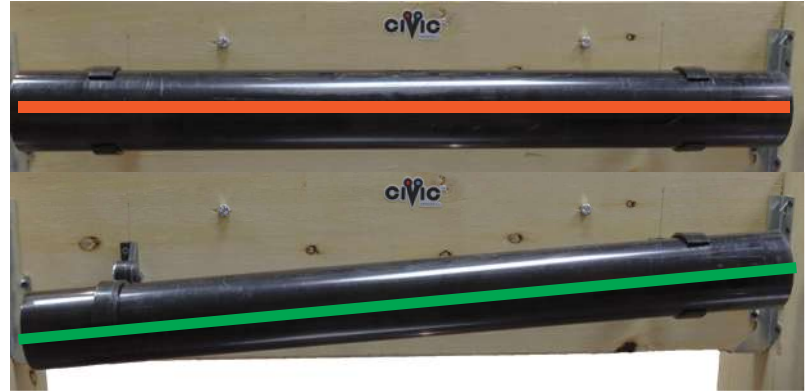


Toll Free Phone: 800.263.7011
Toll Free Fax: 800.459.6227

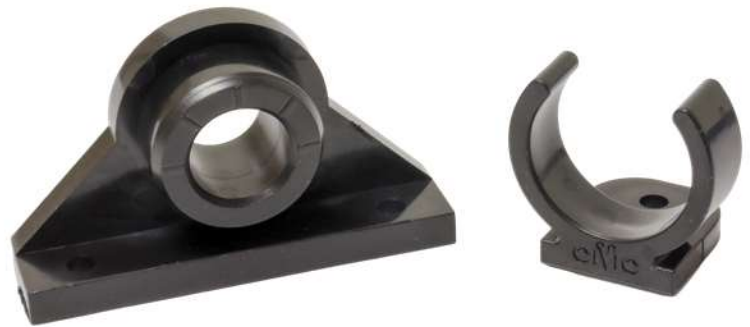


Ped Lav Guide makes sink setups easy

Waterline Guides and anchors enable snap-in installation of ABS pipe with easy slope setting before gluing



The system can also be used to secure PEX tubing and manifolds



Waterline Guides can also be used for quick snap-in secure hanging of PEX pipe along ABS runs

